



# NETSCC

**funding for evaluation research in health**

Needs-led and science-added  
management of evaluation research



# Looking for a grant?

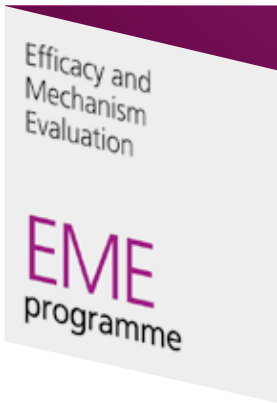
## Research themes

Programmes fund research across the common themes of: technology evaluation, public health, and health services & organisation, while each has a distinct remit.

	Research theme		
	Technology evaluation	Health services & organisation	Public health
EME	✓		✓
HSR		✓	✓
HTA	✓	✓	✓
PHR			✓
SDO		✓	✓
	<p><i>Technology evaluation</i> covers evaluations into the efficacy, effectiveness, costs and broader impact of healthcare interventions</p> <p>Unsure whether to apply to EME or HTA?</p> <p>Please go to: <b><a href="http://www.netscc.ac.uk/technology">www.netscc.ac.uk/technology</a></b></p>	<p><i>Health services &amp; organisation</i> covers evaluations with the aim of improving health outcomes, by funding research that improves patient safety and service organisation, delivery and quality</p> <p>Unsure whether to apply to HTA, HSR or SDO?</p> <p>Please go to: <b><a href="http://www.netscc.ac.uk/hso">www.netscc.ac.uk/hso</a></b></p>	<p><i>Public health</i> covers interventions intended to improve the health of the public and reduce inequalities in health</p> <p>Unsure which programme to apply to?</p> <p>Please go to: <b><a href="http://www.netscc.ac.uk/publichealth">www.netscc.ac.uk/publichealth</a></b></p>

We are happy to advise on queries about remit before submission. We can also support the transfer of an application between programmes if it is more appropriate to a different programme than the one originally submitted to.

# Programmes managed by NETSCC



**The EME programme** is aimed at supporting 'science driven' studies with an expectation of substantial health gain. Proposed research must evaluate the clinical efficacy of an intervention, where proof of concept in humans has already been achieved, and may add significantly to our understanding of biological or behavioural mechanisms and processes. The EME programme is funded by the Medical Research Council and managed by NETSCC. It was launched in April 2008 and has a nominal annual budget of £15m.



**The HSR programme** funds research to improve the quality, effectiveness and accessibility of the NHS. Researchers are invited to submit both primary research and evidence synthesis proposals that would not currently be funded by existing NIHR, DH and MRC programmes, either due to remit or cost. Launched in October 2008, the HSR programme usually has two closing dates per year for the submission of outline proposals, and has a nominal annual budget of £0.7m for 2010/11.



**The HTA programme** delivers research information about the effectiveness, costs and broader impact of healthcare treatments and tests for those who plan, provide or receive care in the NHS. The report from every project is published in the peer-reviewed journal series *Health Technology Assessment*. Since its inception in 1993 the HTA programme has invested over £280m in more than 800 research projects. The programme has a nominal annual budget of £51m for 2010/11.

NIHR Public  
Health Research

PHR  
programme

**The PHR programme** evaluates public health interventions, providing new knowledge on the benefits, costs, acceptability and wider impacts of non-NHS interventions intended to improve the health of the public and reduce inequalities in health. The PHR programme was launched in Autumn 2008 and has a nominal annual budget of £2.4m for 2010/11.

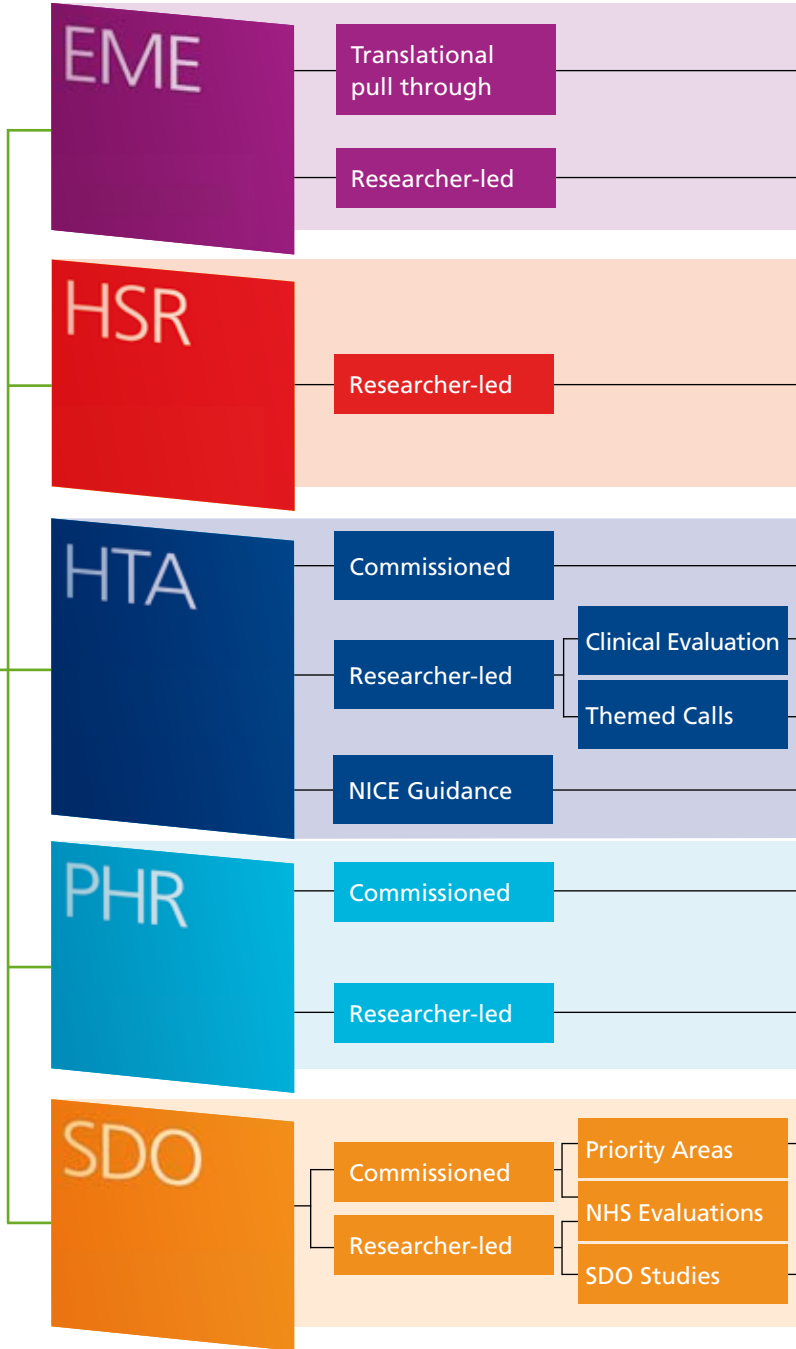
NIHR Service Delivery  
and Organisation

SDO  
programme

**The SDO programme** aims to improve health outcomes for the public by:

- commissioning and funding research and producing evidence that improves practice in relation to the organisation and delivery of healthcare
- building research capability and capacity amongst those who manage, organise and deliver services – improving their understanding of the research literature and how to use research evidence in order to achieve the first aim.

It has a nominal annual budget of £9m for 2010/11.



Types of research

Who defines the question?

Frequency per year

Primary Research; Clinical efficacy of interventions

EME programme

As required

Researcher

Continuous with 3 closing dates

Any study design

Researcher

Continuous with 2 closing dates

Primary Research; Feasibility & Pilot; Evidence Synthesis

HTA programme

4 calls

Primary Research; Feasibility & Pilot; Evidence Synthesis

Researcher

Continuous with 4 closing dates

Primary Research; Evidence Synthesis

Theme from HTA programme  
Questions from Researcher

1 call

Specific technology(s) assessment

NICE

Direct referral to on-contract teams

Primary Research; Evidence Synthesis

PHR programme

As required

Researcher

Continuous with 3 closing dates

Primary Research; Evidence Synthesis; Evaluations

SDO programme

4 calls

NHS, SDO programme or Researcher

2 calls

Researcher

2 calls

## **We are**

### **Needs-led**

because we assess what the important questions are and in what priority they should be answered. We actively ensure that our programmes meet the needs of decision makers. We ensure we are needs-led throughout the funding pipeline by actively assessing need and priority for all funding streams.

## **We are**

### **Science-added**

because we ask does the proposal meet the scientific quality we insist on, and how can we support the delivery and improvement of quality? We actively apply scientific knowledge, expertise and methods to support the scientific quality of proposals and funded research. We communicate closely with the research community, and provide significant post award support and monitoring.

## **We provide**

### **Value for money**

because assessment of need and scientific support maximises the relevance and benefits achievable within a funding stream and actively builds high quality research capacity within the research community.

## **We are**

### **Coordinated**

because we provide a seamless system of interconnected funding programmes operating within the context of the wider NIHR. Practically this means joint funding calls, careful consideration and communication of the remits and interfaces of programmes, actively supporting researchers in navigating these, and internally transferring applications between programmes.

## **We provide**

### **Full and appropriate funding**

because we place no upper limit on the amount of funding granted for a project. Subject to availability of funds, if the question is important enough and the science requires it, we will fund it. For University based projects we will fund up to 80% of the Full Economic Cost (FEC) of the research, and 100% of the direct costs for NHS Trust based projects. Other organisations are also welcome to apply to our programmes and should discuss the basis of costing with us.

## **We encourage**

### **Patient and Public Involvement**

within NETSCC by involving lay parties in the prioritisation of research and the assessment of scientific quality. PPI is also encouraged within the research proposals ultimately funded.

# About NETSCC

## Funding for evaluation research in health

NIHR Evaluation, Trials and Studies Coordinating Centre (NETSCC) manages five distinct but interconnected evaluation research programmes on behalf of the National Institute for Health Research (NIHR).

The coordinated research programmes managed by NETSCC offer a seamless system to support researchers and stakeholders.

The programmes make a difference by focusing on being needs-led and science-added for all funding streams. Most programmes have commissioned and researcher-led workstreams.

NETSCC makes a difference by improving the way the research programmes it manages interact with the wider funding environment, and through developing interaction and coordination between the different programmes.

### **Commissioned workstreams**

start with the information needs of decision makers typically, but not exclusively, within the NHS. These are refined and prioritised by people with expertise in the field, and commissioning briefs are advertised. Applications are then assessed for compliance with the commissioning brief, scientific quality, feasibility and value for money.

### **Researcher-led workstreams**

are open calls for researchers to apply for funding for their own topics and questions. These applications are prioritised in terms of NHS or other information need in a process similar to that in the commissioned workstreams. Applications are then assessed for scientific quality, feasibility and value for money.

# Contact details

## NETSCC

For general information on NETSCC and our work email [info@netscc.ac.uk](mailto:info@netscc.ac.uk) or visit [www.netscc.ac.uk](http://www.netscc.ac.uk)

## EME programme

The Efficacy and Mechanism Evaluation programme is funded by the Medical Research Council and managed by NETSCC.

For more information and to apply for funding email [info@eme.ac.uk](mailto:info@eme.ac.uk) or visit [www.eme.ac.uk](http://www.eme.ac.uk)

## HSR programme

The NIHR Health Services Research programme is funded by the NIHR, with contributions from the CSO in Scotland and NISCHR in Wales.

For more information and to apply for funding email [hsrinfo@southampton.ac.uk](mailto:hsrinfo@southampton.ac.uk) or visit [www.hsr.nihr.ac.uk](http://www.hsr.nihr.ac.uk)

## HTA programme

The NIHR Health Technology Assessment programme is funded by the NIHR, with contributions from the CSO in Scotland and NISCHR in Wales.

For more information and to apply for funding email [hta@hta.ac.uk](mailto:hta@hta.ac.uk) or visit [www.hta.ac.uk](http://www.hta.ac.uk)

## PHR programme

The NIHR Public Health Research programme is funded by the NIHR, with contributions from the CSO in Scotland, NISCHR in Wales and HSC R&D, Public Health Agency, Northern Ireland.

For more information and to apply for funding email [info@phr.ac.uk](mailto:info@phr.ac.uk) or visit [www.phr.nihr.ac.uk](http://www.phr.nihr.ac.uk)

## SDO programme

The NIHR Services Delivery and Organisation programme is funded by the NIHR, with contributions from the CSO in Scotland and NISCHR in Wales.

For more information and to apply for funding email [sdo@southampton.ac.uk](mailto:sdo@southampton.ac.uk) or visit [www.sdo.nihr.ac.uk](http://www.sdo.nihr.ac.uk)

NETSCC is funded by the National Institute for Health Research (NIHR) and was established at the University of Southampton in 2008. UK Government support for medical research is channelled primarily through the National Institute for Health Research (NIHR) and the Medical Research Council (MRC). Broadly speaking, the NIHR funds later-phase health research, which has the potential to influence the delivery of healthcare to patients, while the MRC supports basic and early clinical research. The two bodies work closely together, overseen by the Office for Strategic Coordination of Health Research (OSCHR) to ensure that there is a continuum of research opportunities along the translational pathway and to ensure activities are coordinated.



For general information on  
NETSCC and our work please:

Email: [info@netscc.ac.uk](mailto:info@netscc.ac.uk)

Visit: [www.netscc.ac.uk](http://www.netscc.ac.uk)

Write to: NETSCC, Alpha House,  
University of Southampton Science Park,  
Southampton SO16 7NS

This leaflet is for information purposes only and  
does not constitute a contract or intent to enter  
into a contract. The information contained is assured  
to be correct up to July 2010 (version 4).

